

## Repair Parts For Use With V-5410 High Pressure Normally Closed Valves 2-1/2 Through 4 in. Cast Iron 250 lb ANSI Raised Flanges

### Description

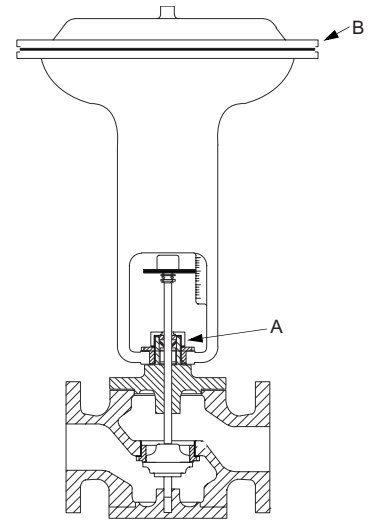
The repair parts listed in the selection chart are the only available parts for the V-5410 series of valves.

### Selection Chart

Repair Parts for use with V-5410<sup>1</sup>

Code Number	Callout	Description	
	<b>A</b>	Packing Kits: Include PTFE V-Rings for 2-1/2 through 4 in. Valves	
V-5290-6842 <sup>2</sup>			
		Packing Kit:	Steam Valves
V-4530-650 <sup>3</sup>		V-3000, 4R	
V-4530-626 <superscript>3.		5R, 8R	
	<b>B</b>	Packing Kit	Water Valves
V-9999-608 <superscript>3.		V-3000, 4R	
		Diaphragms	
V-4710-602		4R	
V-4710-603	5R		
V-4710-604	8R		

1. This model discontinued in 1993.
2. For valves shipped after June 1982.
3. For valves shipped before June 1982.



Repair Parts, V-5410